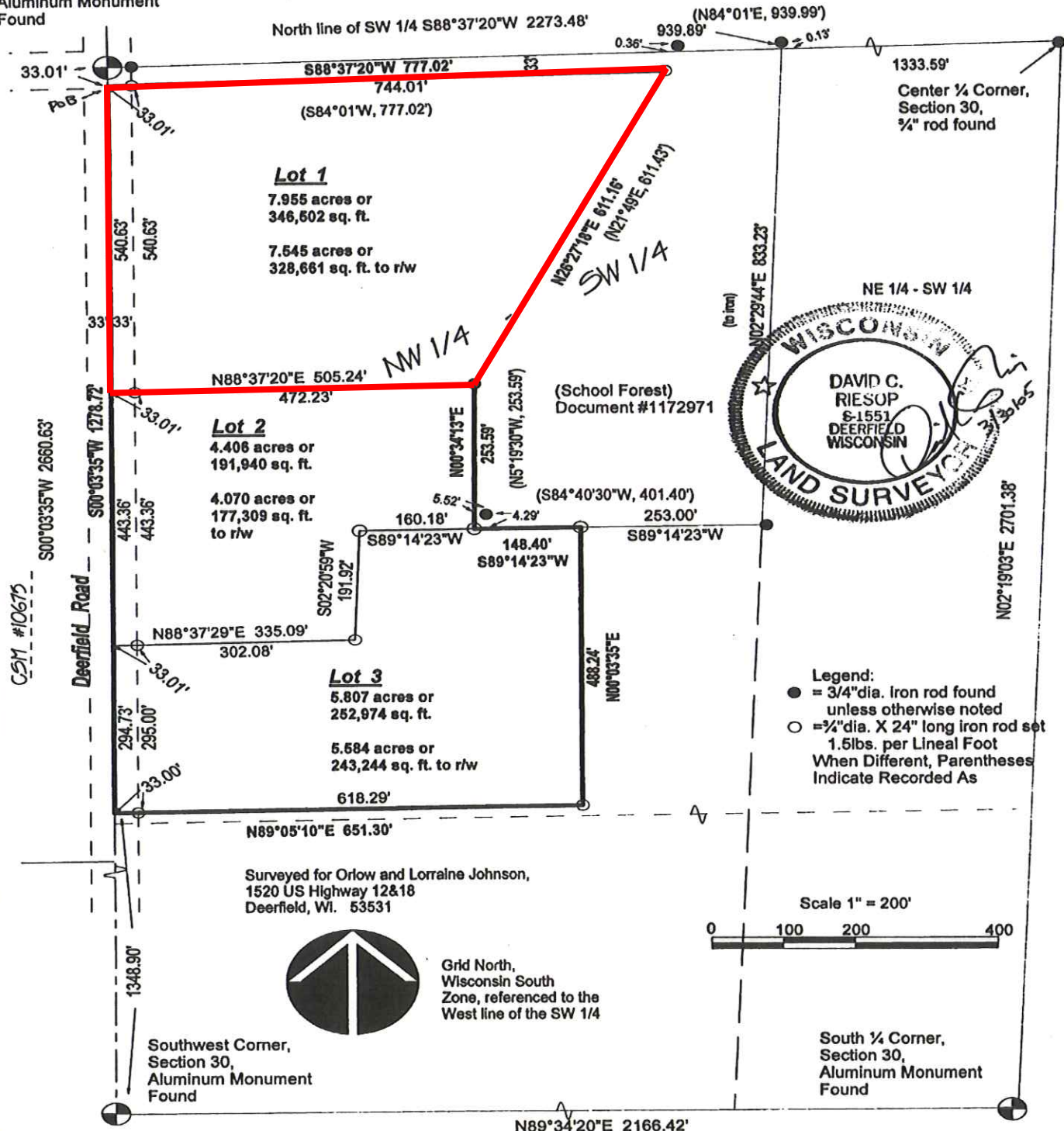


# Certified Survey Map

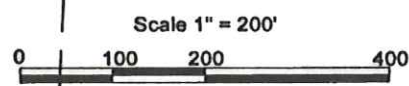
West 1/4 Corner,  
Section 30,  
Aluminum Monument  
Found

Part of the fractional NW 1/4 of the SW 1/4, Section 30, T.7N.,  
R.12E., Town of Deerfield, Dane County, Wisconsin

Center 1/4 Corner,  
Section 30,  
3/4" rod found



- Legend:
- = 3/4" dia. Iron rod found unless otherwise noted
  - = 1/2" dia. X 24" long iron rod set 1.5lbs. per Lineal Foot
- When Different, Parentheses Indicate Recorded As



Surveyed for Orlow and Lorraine Johnson,  
1520 US Highway 12&18  
Deerfield, WI. 53531

Southwest Corner,  
Section 30,  
Aluminum Monument  
Found

South 1/4 Corner,  
Section 30,  
Aluminum Monument  
Found

## Wisconsin Mapping

surveying and mapping services  
306 West Quarry Street, Deerfield, Wisconsin 53531  
(608) 764-5602

Dwg. No. 2963-05 Date 03/15/2005  
Sheet 1 of 2  
Document No. 4037917  
C. S. M. No. 11365 V. 69 P. 36

13